

Bradford National Bank

100 E. College Ave., P. O. Box 279
Greenville, IL 62246
Address Service Requested
Administered by Now and Then Travel, LLC
Phone: 618-567-7392
E-mail: nowandthentravel@yahoo.com



Bradford Travel Club



www.BradfordBank.com
www.BradfordAgServices.com



Shred Your Secure Financial Documents for Free in October

Bradford National Bank, with locations in Greenville, Highland, and Marine, is sponsoring two free shredding and recycling days at the bank.

The first will be held on Saturday, October 17th from 9 am - 11 am in Greenville at the Bradford Community Building, and again on Saturday, October 24 from 9-11 am at the Highland bank, located at 1100 Mercantile Drive.

The bank is inviting businesses and residents to bring old financial documents, cancelled checks, bank statements, tax returns or investment documents to be securely destroyed and recycled. Items collected will be securely transported in locked contain-

ers to Highland Recycling and Shredding for destruction.

Highland Recycling and Shredding will accept old computer hard drives for secure destruction at the Bradford National Bank event. All serial numbers are recorded; the physical hard drives are then shredded and then recycled.

Bradford National Bank has held similar events at both locations and they continue to be well received. The event is being held in conjunction with Highland Recycling and Shredding, who are members of the National Association for Information Destruction and are licensed and bonded to securely dispose of confidential documents.



Luke Harris, owner of the facility in Highland, said, "Even a seemingly unimportant piece of paper may provide personal clues about you, a loved one, your business, or an employee. With identity theft running rampant, don't take the chance of allowing vital information to slip by undetected."

What: Secure Recycle and Shredding Day

What: Saturday, October 17 in Greenville.

Saturday, October 24, in Highland.

Time: 9-11 am

Cost: Free



Judy & Bill Schneck
Now and Then Travel, LLC
Phone—618-567-7392
nowandthentravel@yahoo.com

Bradford Travel Guide

Bradford National Bank
www.BradfordBank.com

Volume 19, Issue 4

October 2015

By Request...The Panama Canal

We are heading to Panama at the request of clients. Dates are **Feb. 11-19, 2016.**

We fly to Panama and begin our tour at the Gamboa Rainforest Resort. After meeting fellow travelers at breakfast, we board the Pacific Queen for a partial transit cruise through the Panama Canal. Enjoy lunch on the boat and pass through two locks. On-board staff will explain the construction and operation of the canal.

We will disembark at Flaminco Marina in Panama City and visit a seafood market and Casco Antiguo, the Old Quarter. This is a UNESCO World Heritage site which was settled in 1673.

(B,L,D)

The next morning a guided nature walk takes us through the resort's jungle forest and gardens. Then

we set off for an excursion to an Embera indigenous village for a scenic ride up the Chagres River. There we will join in their dances and enjoy a simple lunch cooked traditionally. The tribe strives to preserve their heritage in home building techniques and crafts such as basket weaving and tagua nut carving. Enjoy free time back at the resort. (B,L)

Day four will include a visit to the Miraflores Locks Visitors Center to view the Panama



Canal and learn about its rich past, present and future. Watch ships traverse the lock system. We continue on to the

Anton Valley, a community nestled inside the second largest volcano crater in the world. We will visit a local handicraft market and see mola embroidery. Our hotel is at the base of the mountain. (B,D)

Our next day starts with visits to the Museum El Valle, an orchid nursery, and the El Nispero Zoo.

You have a free afternoon to explore. (B)

A unique hat style is native to Panama and we will visit a Panama Hat workroom to see how these hats are created. (Continued on page 2)



Angel Street

The Travel Club is changing gears a bit to attend a play called Angel Street at the Rep. Date is **November 4.**

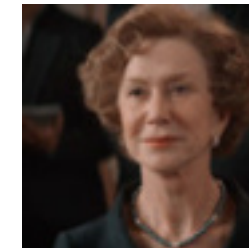
Mrs. Bella Manningham is going mad. Confined to an old and dark London home, her suave husband and caretaker, Jack, accuses her of playing wicked pranks and tricks that she can't recall, tormenting

Bella and making her question her own sanity. Frightened, Bella believes everyone is against her, until one evening when a keen police inspector pays her a visit, shedding light on information that could save her life. Equal parts mystery, psychology and cruel behavior, Angel Street is one of Broadway's longest running plays.

Before the show, we will have a casual pub lunch at Llywelyn's. Cost is **\$87** per person. Don't miss a chance to see a gripping drama. Time is short, so get your registrations in soon. Deadline is October 15. No tickets will be available after that date.



Woman in Gold



Helen Mirren

We are showing a special film in the Bradford Community Building on **November 9.** A catered lunch will be served at 11:30 a.m. followed by the movie.

Woman in Gold is based on the true story of the late Maria Altmann, a Holocaust survivor who lived in Los Angeles. It is an extraordinary tale of how she and lawyer Randal Schoenberg fought for reclamation of an iconic painting of her aunt which was made of gold and had been taken from her family by the Nazis. Helen Mirren stars as Maria.

\$18 per person. Register by October 15.



Bradford Travel Guide

Panama Canal continued.....

Next, we visit an orange grove and learn about the cultivation of this important crop. A picnic lunch in the grove will be a special treat. We will settle into a beachfront hotel on the Pacific Coast at Playa Blanca. (B,L)

Enjoy the beach the following day. There are three optional tours offered on this trip. None are expensive. Two are \$45 and one \$55 which may be enjoyed in some of the leisure time. Or just chill out and enjoy the sunshine. (B,D)

We return to Panama City for a tour of historic sites including the ruins of the oldest Spanish settlement on the Pacific. (B,D)

We fly home on Feb. 19. (B)

Cost is **\$3149** per person, double occupancy. **Lora Carlson will give a presentation on this trip on Monday, Sept. 21 at 10 a.m. in the Bradford Community Building. Come and hear all the details. Sign-ups that day will save \$100. Other discounts are available to customers with Collette loyalty credits. Anyone who went on the San Antonio trip gets this extra discount!**

It's Not Too Late...Kentucky Christmas

Time is short, but you can still get onto our Kentucky Christmas trip by paying the price in full. Our trip is ALL INCLUSIVE unlike many other tours. When comparing trips, keep in mind that even gratuities are included in our package. Trip is also customized.

Dates are **December 2-4** and full cost is **\$650** per person, double occupancy.

We will enjoy a hot brown sandwich which was invented at the Brown Hotel in Louisville. We will see the Christmas display

at the Frazier Museum—Holidays Around the World. At the Galt House we will see KaLightscope and afterwards enjoy a dinner show starring Pam Tillis and Friends.

Louisville has an impressive Victorian area, and we will get a special tour with a step-on guide plus a stop at one of the homes.

Then we will enjoy a buffet lunch at Churchill Downs, have a tour, and watch Reindeer Games. You will receive \$5000 in play money and reindeer headbands.

After dinner at the Bristol Bar and Grill, we'll view the Lights Under Louisville, an underground display of over 2 million lights.

No trip is complete without visiting the Louisville Slugger Museum and Factory. After lunch at a local restaurant, our final activity will be a tour of the Evan Williams Bourbon Experience.

Don't miss out on a short holiday tour. Call immediately to hold your space. 618-567-7392. Payment in full must be received by October 1.

The Price is Right Live

How many of you watch The Price is Right? It has been on television for decades, but recently it has been put on as a theater show as well. While not having the television host, the principles are the same. It is a fun evening with audience participation. Who knows? One or more of our clients could come home with a great prize. Date is **February 25.**

For information on being a contestant, contact the box office



at the Effingham Performance Center: boxoffice@TheEPC.org. No purchase is necessary to register for a chance to be a contestant.

The program will include classic games from Plinko to Cliffhangers to The Big Wheel, and even the fabulous Showcase.

Before the show we will have dinner at Niemerg's Steakhouse.

Cost is **\$77** per person. Register by January 20.



Great American Crooners



Oatman House

Time is almost up, but you can still get on a program at the Sheldon on **October 7.** Coffee and pastries precede the show. This was an emergency replacement for our Discovering Benny tour on this date. The Principia College professor who was to conduct the tour died suddenly.

Alan Ox performs songs by Mel Torme, Tony Bennett and others.

Lunch follows at the Oatman House, a unique gingerbread historic building.

Cost is only **\$59** per person. To get on this trip, call immediately. 618-567-7392

To register for any Travel Club activity, clip registration form, attach check, and return to any Bradford National Bank location. Or, mail to Now and Then Travel LLC, P. O. Box 693, Greenville, IL 62246. **Checks should be payable to Now and Then Travel, LLC.**

**Panama Canal
February 11-19, 2016**

**Presentation Sept. 21 at 10 a.m. in Bradford Community Building
Discounts available that day!**

Includes sites and attractions as listed in itinerary. For a detailed flyer, call 618-567-7392.

Name _____

**The Price Is Right
February 25, 2016**

Enjoy the road version of the iconic game show. Even register for a chance to be a contestant. Dinner at Niemerg's included. You will have a choice of entrée, salad bar, drink and pie. You will order that night. They do not pre-order.

\$77 per person
Register by Jan. 20, 2016

Name _____

**A Kentucky Christmas
December 2-4, 2015**

Highlights: Brown Hotel lunch, Frazier History Museum, KaLightscope, Pam Tillis Christmas show, tour of historic district, Churchill Downs, Mega Cavern Light Show, Louisville Slugger Museum, and Evan Williams Bourbon Experience.

\$650 per person, double, **\$770** single.
Payment in full due with registration.

Name _____

**Woman in Gold
November 9, 2015**

Includes movie and full catered lunch close to home!

\$18 per person
Register by Oct. 15.

Name _____

**Angel Street
November 4, 2015**

Enjoy a very different kind of program—a psychological thriller set in London. Before the show enjoy a pub lunch at Llywelyn's.

\$87 per person
Register by October 15.

Name _____